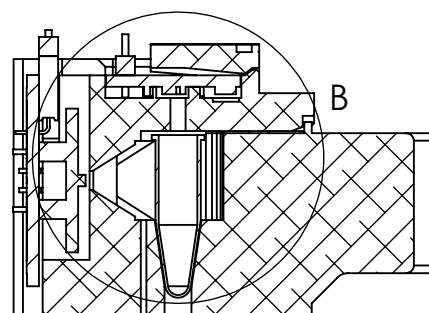
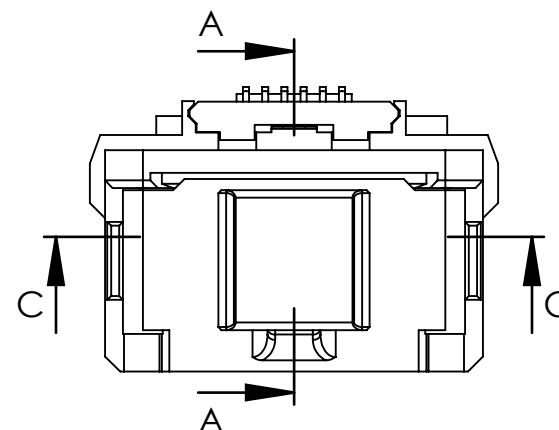


Showing sensor block only



SECTION A-A



spectral sensor

$\phi 6.00$

Recommended fill  
between marks shown

2.00  
6.00

Standard 0.2mL  
PCR tube,  
lid removed

17°

DETAIL B  
SCALE 2 : 1

Optical aperture  $\phi 2.0$

Sensor aperture  $\phi 0.5$

optional alternative  
source ( $\phi 3\text{mm}$ )

Optional alternative  
source ( $\phi 3\text{mm}$ )

Center source (smt)

SECTION C-C

STELLA -- NASA GSFC

LS-P2 optical geometry

Dimensions in mm

Paul Mirel 20260418